



REC# #: 752636

RECORDED 5/8/2019 AT 1:09 PM BK# 2620 PG# 1678
Debra K. Lee, CLERK OF LARAMIE COUNTY, WY PAGE 1 OF 1

STATE OF WYOMING CORNER RECORD

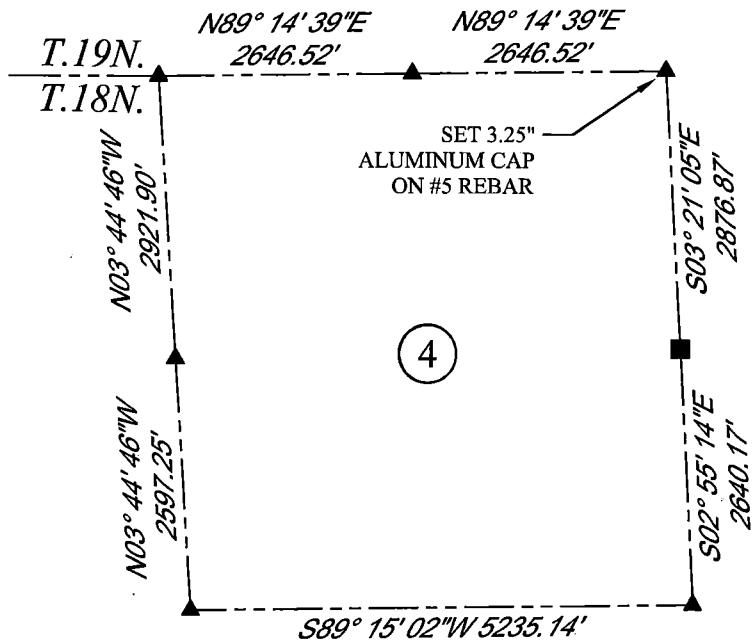
(In compliance with the CORNER PERPETUATION AND FILING ACT, Wyoming Statutes, 1997 Section 33-29-140, et. seq., and the Rules and Regulations of the Board of Registrations for Professional Engineers and Professional Land Surveyors)

NORTH EAST CORNER SECTION 4, T. 18 N., R. 61 W., 6TH P.M., LARAMIE COUNTY, WYOMING

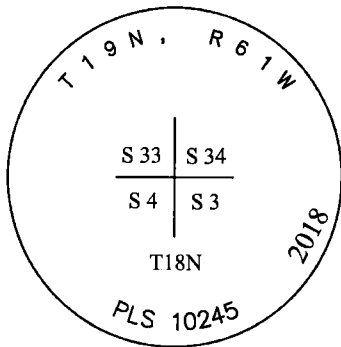
GLO: SET A SANDSTONE 18X16X4, 12 IN DEEP WITH 3 MARKS ON EAST AND WEST FACES FOR CORNER TO SECTIONS 3, 4, 33, 34.
FOUND: NOTHING
SET: SET A 3.25" ALUMINUM CAP ON #5 REBAR, 0.1' BELOW SURFACE MARKED AS SHOWN. SET (2) MAG NAILS IN FENCE POSTS EAST AND WEST OF MONUMENTS. CORNER IS SET ± 1' ON NORTH SIDE OF E & W FENCE LINE. POSITION RE-ESTABLISHED BY SINGLE PROPORTION.



SCALE: NONE
NORTH DETERMINED BY
G.P.S OBSERVATIONS



SET 3.25" ALUMINUM CAP, STAMPED AS SHOWN



DATE OF FIELD WORK: 09/20/2018 OFFICE REFERENCE: MERIDEN

LEGEND:

- FOUND BLM CAP
- FOUND USFS CAP
- FOUND STONE
- FOUND PRIVATE MONUMENT
- ◇ CALCULATED POSITION
- ▲ SET MONUMENT (LS10245)
- SECTION LINE

CROSS INDEX DIAGRAM

	1	2	3	4	5	6	7	8	9	10	11	12	13	14	15	16	17	18	19	20	21	22	23	24	25	
A																										
B																										
C			6		5		4		3		2		1													
D																										
E																										
F																										
G			7		8		9		10		11		12													
H																										
J																										
K																										
L			18		17		16		15		14		13													
M																										
N																										
O																										
P			19		20		21		22		23		24													
Q																										
R																										
S																										
T			30		29		28		27		26		25													
U																										
V																										
W																										
X			31		32		33		34		35		36													
Y																										
Z																										
	1	2	3	4	5	6	7	8	9	10	11	12	13	14	15	16	17	18	19	20	21	22	23	24	25	

WOOD
2615 AVIATION DRIVE
SHERIDAN, WY 82801
PH: 307-675-6400



THIS CORNER RECORD WAS
PREPARED BY ME OR UNDER
MY DIRECTION AND
SUPERVISION,
SEAL AND SIGNATURE

